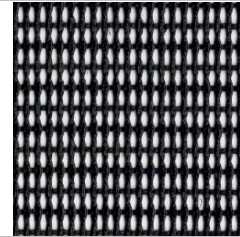


# ESONE®

PTFE & Silicone Coated Fiberglass Fabric & Belt

## TDS of OPEN MESH SERIE YS6014



Product	Product Category	Coating
PTFE GLASS FABRIC	OPEN MESH SERIE	PTFE

Properties	Metric	Imperial
Standard width Please ask for other widths	1000, 1500, 1800, 2000, 3000, 3600 mm	39.5, 59, 71, 78.7, 118, 142 inches
Mesh Size	2x2.5 mm	2x2.5 mm
Tensile Strength	290 N/cm      Warp	166 lbs/inches      Warp
	400 N/cm      Fill	229 lbs/inches      Fill
Color	Black	Black
Temperature resistance	-73 to +260 °C	-100 to +500 °F

ESONE® open mesh series, PTFE coated mesh belt is coated with high quality PTFE resin, the basic material is woven open mesh fiberglass or aramid fabric (like Kevlar) or Nomax. The main applications is screen printing, drying industry, packaging industry, textile industry, wood processing industry and so on, which is used as heat resistant and non stick conveyor belt to transport materials through ovens. 2x2.5 mm PTFE open mesh fabric is FDA & LFGB certificated, can be used in direct contact with food.



ESONE® is a registered trademark owned by  
 Jiangsu Esoner New Material Co.,Ltd  
 Taixing Youngsun FL-Plastics Co.,Ltd  
 Western End of South Third Ring Road, Taixing, Jiangsu, China  
 Tel: 0523-87590206 E-Mail: sales@chinayoungsun.com